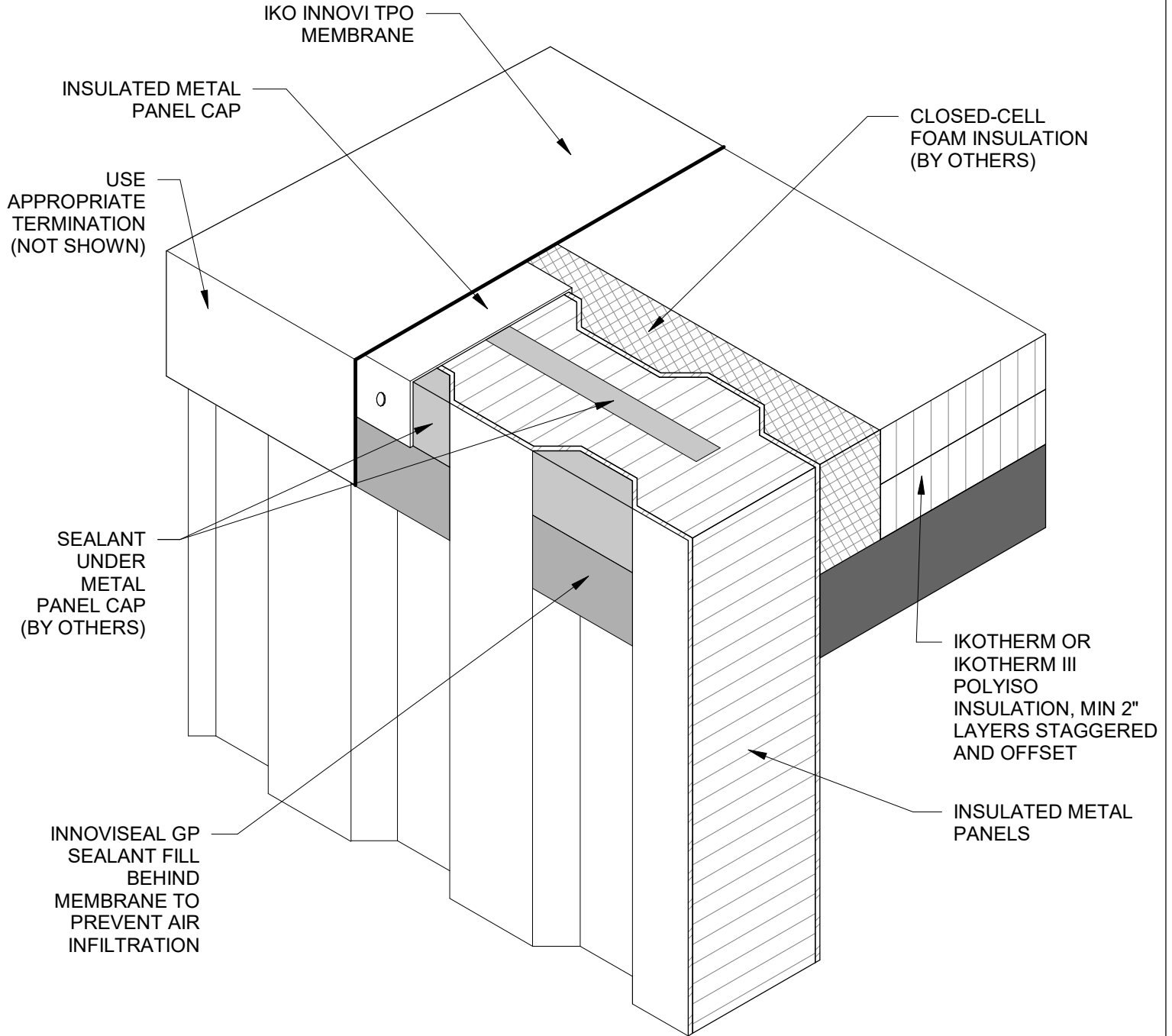


NOTE: APPLY CLOSED-CELL FOAM INSULATION (BY OTHERS) AS FOLLOWS:

1. HOLD BACK ABOVE-DECK INSULATION 1" FROM ALL EDGES, FILL TO THE HEIGHT OF THE ABOVE-DECK INSULATION 1" FROM ALL EDGES.
2. FILL ALL PERPENDICULAR STEEL DECK FLUTES 12" FROM ALL EDGES, AND THE FIRST TWO PARALLEL FLUTES.
3. FILL ALL GAPS



NOT TO SCALE

Title: ROOF PREPARATION - INSULATED METAL WALL PANEL

Detail Number: T-CS-2



**COMMERCIAL**

Specify with Confidence.